



# CRONIBEN

The most active and potent prostaglandin analogue

- ✓ Is widely used in dairy and beef cattle with outstanding performance.
- ✓ Responsible for breaking down the Corpus luteum (CL) and luteal tissue, which could be used strategically.
- ✓ Formulated based on D-Cloprostenol, the most active synthetic analogue of natural prostaglandin (PGF).
- ✓ Confers high affinity for target receptors delivering the highest efficacy.

The evolution of animal health



# CRONIBEN



## Indications for use

- Reproductive management
- Estrous cycle synchronization
- Treatment of follicular luteal cyst
- Treatment of persistent Corpus Luteum (CL)



## Composition

D-Cloprostenol  
0.075 mg/ml

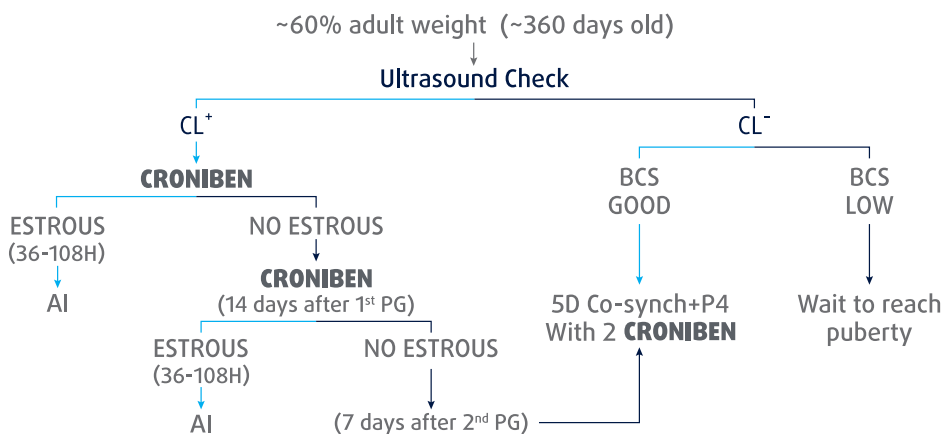


## Recommended dose

2 mL (0.150 mg/animal)

## Heifers Reproductive Management Strategies

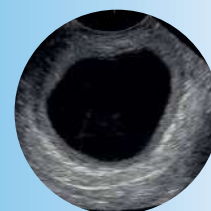
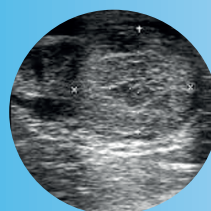
### Heifers



## CRONIBEN

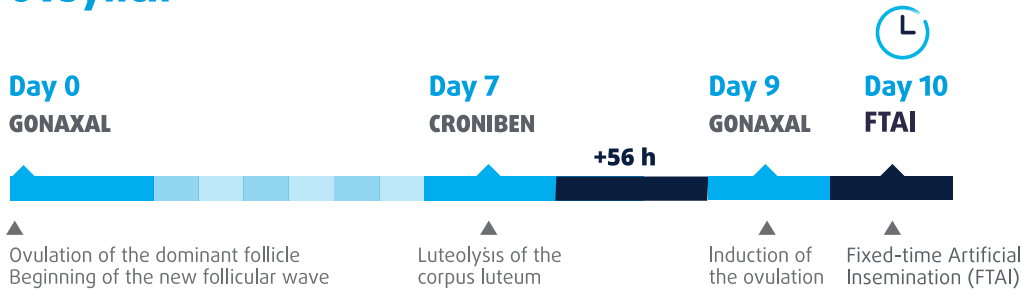
### Targets de luteal tissues

For heifers and cows  
No side effects  
Accurate results

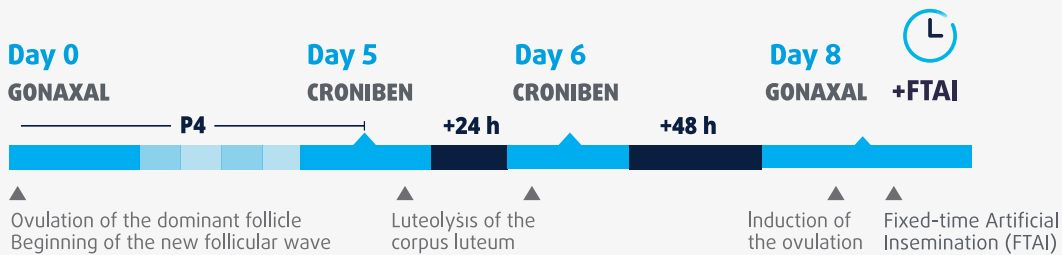


# Fixed-Time AI programs

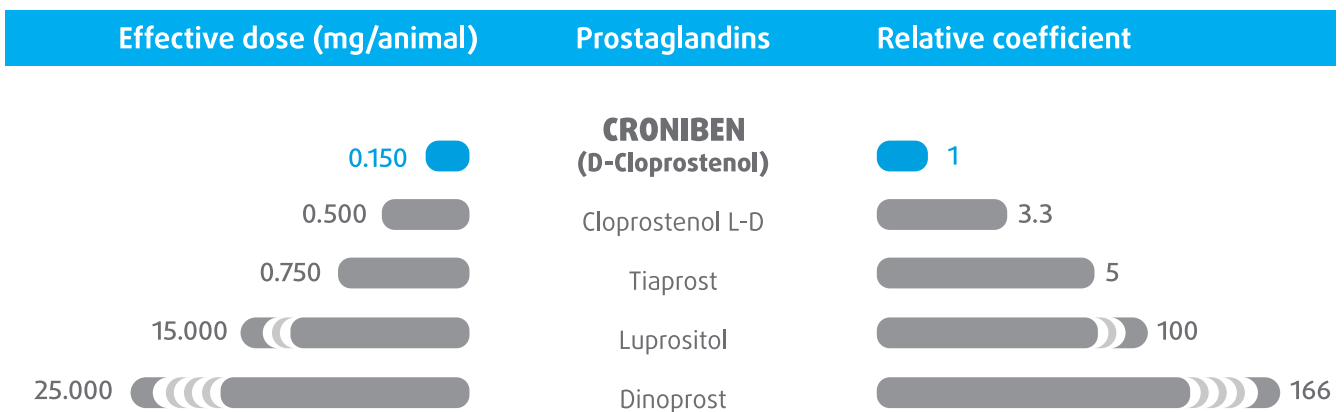
## Ovsynch



## 5D Co-synch + P4 with 2 PGF



## CRONIBEN contains D-Cloprostenol which is the most powerful PGF analogue



The evolution of animal health



[info.asia@biogenesisbago.com](mailto:info.asia@biogenesisbago.com)